

Association between serum insulin and uric acid concentrations in type 2 diabetic subjects in Nigeria

Y P Mamza, B R Aladeusi, R M Gali, D S Mshelia, R Y Genesis, and S A Habu

Abstract

Diabetic patients who are hyperuricaemic appear to be at increased risk for developing diabetic complications, renal disease, and cardiovascular disease. The present study was undertaken to determine the association between serum insulin and uric acid concentrations in individuals with type 2 diabetes and control subjects attending the University of Maiduguri Teaching Hospital (UMTH) in Nigeria. One hundred and sixty (160) subjects with an age range of 30–75 years participated in the study: 100 confirmed type 2 diabetes subjects and 60 non-diabetic controls. A significantly ($p < 0.05$) high mean serum insulin was observed in type 2 diabetes subjects as compared with controls (9.3 ± 2.0 vs 5.1 ± 0.6 $\mu\text{IU/L}$). No significant difference ($p > 0.05$) was observed in the mean serum uric acid of diabetic and control subjects (358 ± 89 vs 334 ± 66 $\mu\text{mol/L}$). There was a positive and significant correlation ($r = 0.410$; $p < 0.05$) between serum insulin and uric acid levels in type 2 diabetes subjects. This may relate to the insulin resistance that characterises type 2 diabetes.

Introduction

Diabetes mellitus, one of the most common diseases worldwide is considered a major health problem with increasing prevalence, and is the leading cause of morbidity, mortality, and complications.^{1,2} Diabetes is a metabolic disorder characterised by hyperglycaemia and insufficiency of secretion or action of endogenous insulin.

Type 2 diabetes is a heterogeneous disease associated with variable degrees of insulin resistance, impaired insulin secretion, and increased glucose production. Insulin resistance occurs when cells become less sensitive to the effects of insulin.³ The 'insulin resistance syndrome' consists of a group of metabolic abnormalities that increase

the risk of cardiovascular disease (CVD) and diabetes.

Elevated serum uric acid levels or hyperuricaemia is a risk factor for insulin resistance, peripheral arterial disease, and other components of the metabolic syndrome.⁴ For some time, it has been recognised that serum uric acid is positively associated with serum glucose levels in healthy subjects.⁵ Recent studies have demonstrated that uric acid levels are higher in subjects with prediabetes and early type 2 diabetes, than in healthy controls.⁶ Furthermore, hyperuricaemia was found to increase the risk of developing type 2 diabetes in individuals with impaired glucose tolerance (IGT).⁷ An elevated uric acid level often precedes the development of obesity^{8,9} and diabetes.^{10,11}

However, hyperuricaemia is not always found in diabetic patients, and conflicting data exist regarding uric acid in type 2 diabetes, as low levels may be found in diabetic patients, while elevated levels are a feature of IGT.¹² Although several studies have implicated the role of uric acid in the progress of pre-diabetes to diabetes, this remains controversial and therefore deserves further analysis. The main purpose of this study was to examine the association of serum insulin and uric acid levels in type 2 diabetic subjects in Maiduguri, Nigeria.

Biochemical parameters	Type 2 diabetes subjects (n=100)	Controls (n=60)	p value
FPG (mmol/L)	8.3 \pm 0.5	4.4 \pm 0.1	<0.001
Insulin ($\mu\text{IU/L}$)	9.3 \pm 2.0	5.1 \pm 0.6	0.025
Uric acid($\mu\text{mol/L}$)	35 \pm 89	334 \pm 66	0.069

Table 1: Comparison of biochemical parameters in subjects with type 2 diabetes and controls (means \pm SD)

Patients and methods

A total of 160 subjects were recruited for the study. They were 100 known diabetic subjects attend-

Biochemical parameters	r value	p value
FPG and insulin	-0.038	0.707
FPG and uric acid	-0.206	0.040
Uric acid and insulin	0.410	<0.001

Table 2: Correlation between serum insulin, uric acid, and FPG in diabetic subjects

Y P Mamza, B R Aladeusi, and R M Gali, Department of Medical Laboratory Science, College of Medical Sciences University of Maiduguri, Nigeria; D S Mshelia, Department of Chemical Pathology, College of Medical Sciences University of Maiduguri, Nigeria; and R Y Genesis and S A Habu, Department of Chemical Pathology Laboratory, University of Maiduguri Teaching Hospital, Nigeria. Correspondence to: Dr Y P Mamza, Department of Medical Laboratory Science, College of Medical Sciences University of Maiduguri, PMB 1069, Maiduguri, Nigeria. Email:yamamza@yahoo.com

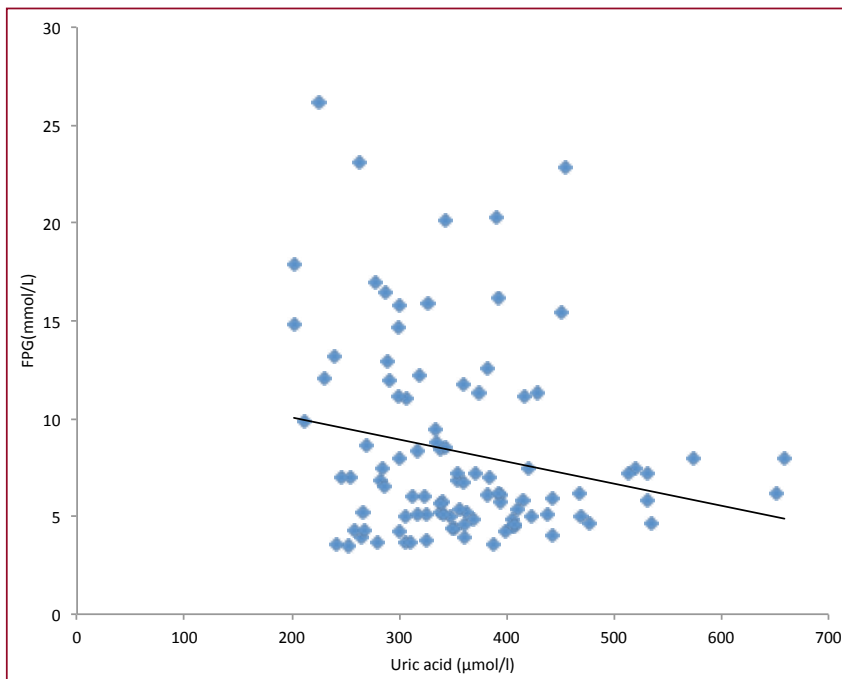


Figure 1: Correlation plot between FPG and serum uric acid in diabetic subjects

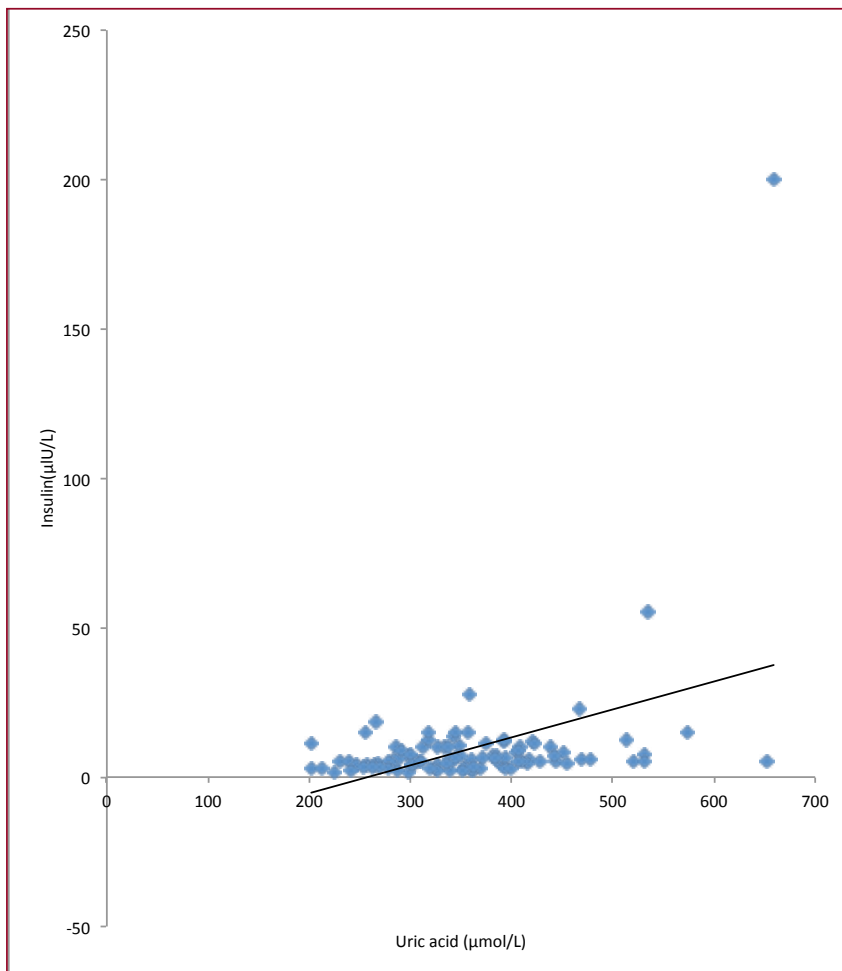


Figure 2: Correlation plot between serum insulin and uric acid

ing the University of Maiduguri Teaching Hospital (UMTH) Endocrinology Clinic and General Outpatient Department, as well as 60 non-diabetic individuals as controls. All were within the age range of 30–75 years. Creatinine estimation was carried out to rule out kidney disease in all subjects. Those with type 1 diabetes, liver diseases, or kidney diseases were excluded from the study. Informed consent was sought from the selected individuals using standard guidelines. Ethical approval was obtained from the Ethical Committee of the UMTH. Plasma glucose was measured using the glucose oxidase peroxidase enzymatic method as described by Trinder.¹³ Insulin was measured by enzyme-linked immunosorbent assay (ELISA), as described by Gerbitz et al.¹⁴ Serum uric acid concentration was measured by the uricase-peroxidase method as described by Trivedi et al.¹⁵

The data generated were analysed using the Statistical Package for Social Sciences (SPSS) version 16.0. Student's t-test was used to compare the means of fasting plasma glucose, serum insulin, and serum uric acid of diabetic and control subjects. The correlations were done by Pearson's correlation coefficient. Scatter plots were determined by using Microsoft Excel. A p value of less than or equal to 0.05 was considered statistically significant

Results

The mean age of the diabetic patients (n=100) was 50±1 years compared with 49±1 years for controls (p=0.537). Mean body mass index was 27.8±5.7 (diabetic group) versus 28.9±5.1 (controls), also non-significant (p=0.324). Similarly, systolic blood pressure (BP) and diastolic BP were similar between the two groups (138±2 vs 128±3 mmHg, p=0.898; and 85±1 vs 87±2 mmHg, p=0.158).

The mean fasting plasma glucose (FPG) and serum insulin were significantly (p<0.05) higher in diabetic subjects than in the control subjects. However, there was no significant difference (p>0.05) in serum uric acid levels of diabetic and control subjects as shown in Table 1.

As shown in Table 2, there was no significant correlation between FPG and serum insulin (r = 0.038; p>0.05). The correlation between FPG and serum uric acid was negative and significant (r = 0.206, p<0.05) which is further illustrated by the scatter

plot in Figure 1. A positive and significant correlation was observed between serum uric acid and insulin ($r = 0.410$; $p < 0.001$), and the scatter plot in Figure 2 also shows this.

Discussion

This study was undertaken to determine the association between serum insulin and uric acid concentrations in type 2 diabetes subjects attending the UMTH. As may be expected, FPG and insulin levels were higher in our diabetic group compared with controls, but there was no significant difference in serum uric acid levels (Table 1).

Hyperglycaemia and insulin resistance occurs when the beta cells of the pancreas become less sensitive to the effects of insulin. This results in hyperglycaemia and a drop in energy production. To compensate for the insulin resistance and to attempt to maintain normoglycaemia, the pancreas produces more insulin. If left unchecked, the cells become even more resistant to insulin, as the pancreas secretes greater amounts in an attempt to bring the system back under control. This results in high blood levels of insulin.¹⁶

In this study, the similar serum uric acid levels in subjects with type 2 diabetes and control subjects is in agreement with the findings of Sudhindra and Bino.¹⁷ The negative correlation observed between FPG and insulin was not significant. The insignificant decrease in glucose with increase in insulin may be due to insulin resistance and failure of the pancreas to maintain the state of compensatory hyperinsulinaemia, which is the maintenance of normal blood glucose via elevated plasma concentrations of insulin.

A negative and significant correlation was shown between FPG and serum uric acid. The significant decrease in FPG with increase in uric acid may be related to insulin resistance. The mechanisms by which uric acid is involved in glucose concentrations or beta cell function and even the development of type 2 diabetes are uncertain.²⁰ It is accepted that the most important mechanism may be that of the association between insulin resistance and renal absorption of urates.¹⁸

In this study we also observed a positive and significant correlation between serum uric acid and insulin in our type 2 diabetes subjects. Whenever there is an increase in insulin level, there appears to be an increase in uric acid level. This may be due to the elevation of serum uric acid which is associated with IGT. Elevated uric acid is also a feature of hyperinsulinaemia and insulin resistance.¹⁹ The result in this study is similar to that reported by Choi et al²⁰ and Anju et al.¹⁶

Based on our research work, it could be deduced that there is a positive correlation between the serum uric acid and insulin levels in type 2 diabetic subjects attending the University of Maiduguri Teaching Hospital. Further work is needed to elucidate the exact cause of this relationship, and its clinical implications.

Acknowledgements

We are grateful to the Department of Chemical Pathology Laboratory, University of Maiduguri Teaching Hospital for providing us with the facilities used for our analysis.

Author declaration

Competing interests: none.

Any ethical issues involving humans or animals: none. Was informed consent required: yes - documentation on file.

References

- King H, Aubert RA, Herman WH. Global burden of diabetes, 1995–2025: prevalence, numerical estimates, and projections. *Diabetes Care* 1988; 21: 1414–1431.
- Sheetz MJ, King GL. Molecular understanding of hyperglycemia's adverse effects for diabetic complications. *JAMA* 2002; 288: 2579–2588.
- Soliman GZA. Blood lipid peroxidation (superoxide dismutase malondialdehyde glutathione) levels in Egyptian type 2 diabetic patients. *Singapore Med J* 2008; 49: 129–136.
- Yoo TW, Sung KC, Shin HS. Relationship between serum uric acid concentration and insulin resistance and metabolic syndrome. *Circulation* 2005; 69: 928–933.
- Clausen JO, Borch-Johnsen K, Ibsen H, et al. Analysis of the relationship between fasting serum uric acid and the insulin sensitivity index in a population-based sample of PRF young healthy Caucasians. *Europ J Endocrinol* 1998; 138: 63–69.
- Kodama S, Saito K, Yachi Y, et al. The association between serum uric acid and the development of type 2 diabetes mellitus: a meta-analysis. *Diabetes Care* 2009; 32: 1737–1742.
- Niskanen L, Laoksonen DE, Lindstrom J, et al. Serum uric acid as a harbinger of metabolic outcome in subjects with impaired glucose tolerance: the Finnish Diabetes Prevention Study. *Diabetes Care* 2006; 29: 709–711.
- Modan M, Halkin H, Karasikand A, et al. Elevated serum uric acid – a facet of hyperinsulinemia. *Diabetology* 1987; 30: 713–718.
- Masuo K, Kawaguchi H, Mikami H, et al. Serum uric acid and plasma norepinephrine concentrations predict subsequent weight gain and blood pressure elevation. *Hypertension* 2003; 42: 474–480.
- Boyko EJ, de Courten M, Zimmet PZ, et al. Features of the metabolic syndrome predict higher risk of diabetes and impaired glucose tolerance: a prospective study in Mauritius. *Diabetes Care* 2000; 23: 1242–1248.
- Johnson RJ, Takaliko N, Sanchez-Lozada LG, et al. Sugars, uric acid, and the etiology of diabetes and obesity. *Am Diab Assoc* 2013; 62: 3307–3315.
- Rosolowsky ET, Ficociello LH, Maselli NJ. High-normal serum uric acid is associated with impaired glomerular filtration rate in non-proteinuric patients with type 1 diabetes. *Clin J Am Soc Nephrol* 2008; 3: 706–713.
- Trinder P. Determination of glucose in blood using glucose oxidase with an alternative oxygen acceptor. *Annal Clin Biochem* 1969; 6: 24–27.
- Gerbitz KD, Pankreatische B. Zellen peptide. Kinetik und konzentration von proinsulin, insulin und C peptide in plasma und urin, problem der meB methoden, klinische aussage und literaturuber. *J Clin Chem* 1980; 18: 313–326.
- Trivedi R, Rebar L, Berta E, et al. New enzymatic method for serum uric acid at 500nm. *Clin Chem* 1978; 24: 1908–1911.
- Anju G, Sahiba K, Naresh M, et al. Correlation of serum insulin and uric acid with glycated haemoglobin levels in patients with type 2 diabetes mellitus. *J Clin Diagnost Res* 2013; 7: 1295–1297.
- Sudhindra RM, Bino JS. A study of serum uric acid in diabetes mellitus and pre-diabetes in a South Indian tertiary care hospital. *Health Sci* 2012; 2: 18–23.
- Desse PH, Shipton EA, Stanwix AE, et al. Beneficial effects of weight loss associated with moderate calorie/carbohydrate restriction, and increased proportional intake of protein and unsaturated fat on serum urate and lipoprotein levels in gout: a pilot study. *Annals Rheum Dis* 2000; 59: 539–543.
- Safi AJ, Mahmood R, Khan MA, et al. Association of serum uric acid with type 2 diabetes mellitus. *Postgrad Med Inst* 2002; 18: 59–63.
- Choi HK, Ford ES. Haemoglobin A1c, fasting plasma glucose, serum C peptide and insulin resistance relation to serum uric acid levels. The Third National Health and Nutrition Examination Survey. *Rheumatology* 2008; 47: 713–717.